

*techno*spacio[✓]

Tech Solution Pvt Ltd.



High Speed Gate

Brushless Servo Motor Quick Pass

Supports multi-functional customization such as card swiping,
Face recognition, code scanning recognition,
Ticketing system and construction site system.



Brushless Anti-collision



Silent Buffer



Infrared Anti-pinch



Strong And Reliable



0.2 Seconds

0.2 Second Recognition And Opening

20~60 People

45 People/Min Traffic Speed

500 times

5 Million Uses

Functional Characteristics



- ◆ Using a dedicated ARM core microprocessor control circuit and digital positioning technology, the startup and control are smooth and the gate's automatic control capability is more accurate.
- ◆ The system operates smoothly, has low noise, and has a simple and reliable structure.
- ◆ The surface of the movement is treated with anti-rust and anti-corrosion treatment, making it durable.
- ◆ Intelligent voice and sound effect prompts make the device more user-friendly and easier to use.
- ◆ The control panel has a counting function.
- ◆ It can be connected with various equipment such as access control systems, consumer systems, electronic ticket systems, biometric identification systems, and electrostatic testers.
- ◆ The channels will automatically spread out after power off and close automatically when power is turned on.
- ◆ Anti-collision function, the swing arm automatically locks when the gate opening signal is not received.
- ◆ The management computer can be used directly to realize remote control and management.

Intelligent Embedded System



Face Recognition



Fingerprint Recognition



Consumer System



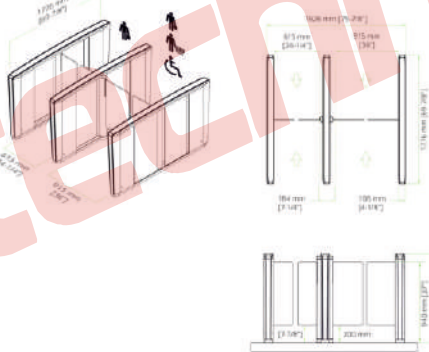
QR Code Recognition



Identity Card Reader

Application Scenarios

- ◆ Subways, stations, docks, tourist attractions, exhibition venues, communities, factories, construction sites, fitness clubs, office buildings, school libraries, entrance and exit control, access control, consumption management, special passage management and control of enterprises and institutions.



TS-SG-900

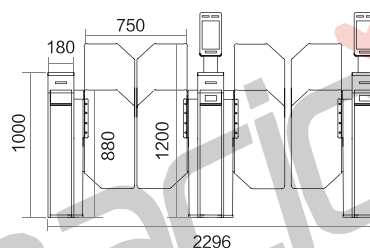
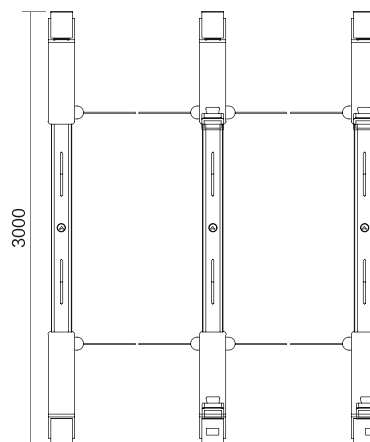
Chassis Material	SUS304 Stainless Steel
Chassis Size	1508*140*1019mm(L*W*H)
Door Wing Material	10mm Plexiglass, Tempered Glass
Passage Width	650mm~1000mm
Input Voltage	110V~220V, 50HZ
Opening Speed	Fastest <0.5 Seconds (User Setting)
Passing Speed	20-60 People/Minute
Usage Environment	Indoor/Outdoor
Ambient Temperature	25°C~70°C





TS-AT-200

Chassis Material	SUS304 Stainless Steel
Chassis Size	3000*180*1000mm(L*W*H)
Door Wing Material	10mm Plexiglass, Tempered Glass
Passage Width	650mm~1000mm
Input Voltage	110V~220V,50HZ
Opening Speed	Fastest <0.5 Seconds (User Setting)
Passing Speed	20-60 People/Minute
Usage Environment	Indoor
Ambient Temperature	25°C~70C



Intelligent Embedded System

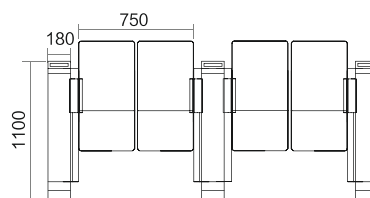
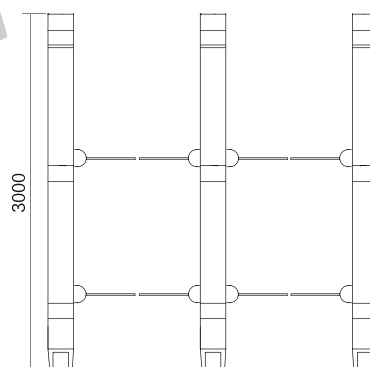


Face Recognition Fingerprint Recognition Consumer System QR Code Recognition Identity Card Reader

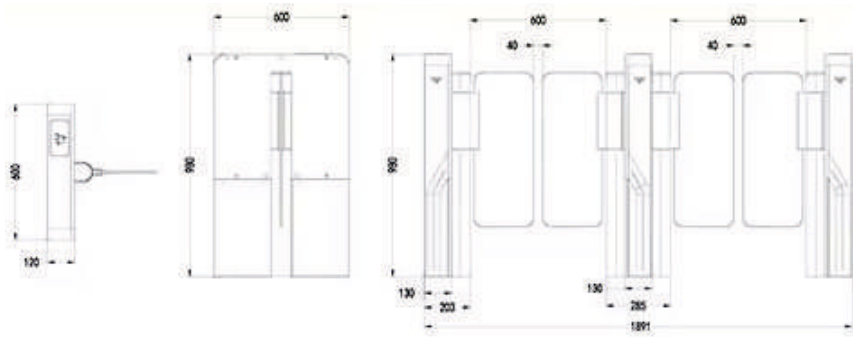


TS-AT-300

Chassis Material	SUS304 Stainless Steel
Chassis Size	3000*180*1000mm(L*W*H)
Door Wing Material	10mm Plexiglass, Tempered Glass
Passage Width	650mm~1000mm
Input Voltage	110V~220V,50HZ
Opening Speed	Fastest <0.5 Seconds (User Setting)
Passing Speed	20-60 People/Minute
Usage Environment	Indoor
Ambient Temperature	25°C~70C



Front View

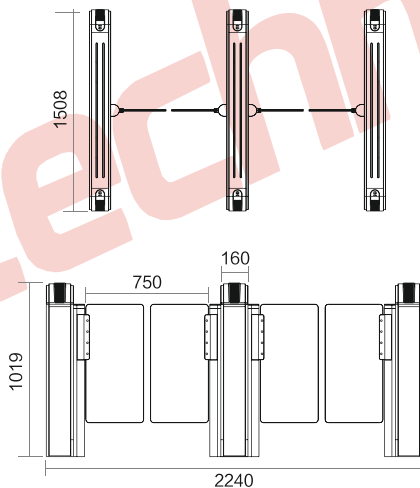


TS-SG-001

Chassis Material	SUS304 Stainless Steel
Chassis Size	600*200*900 mm(L*W*H)
Door Wing Material	10mm Plexiglass, Tempered Glass
Passage Width	600mm~900mm
Input Voltage	110V~220V, 50HZ
Opening Speed	Fastest <0.5 Seconds (User Setting)
Passing Speed	20-60 People/Minute
Usage Environment	Indoor
Ambient Temperature	25°C~70°C

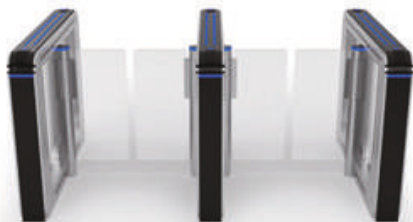
Application Scenarios

- ◆ Subways, stations, docks, tourist attractions, exhibition venues, communities, factories, construction sites, fitness clubs, office buildings, school libraries, entrance and exit control, access control, consumption management, special passage management and control of enterprises and institutions.

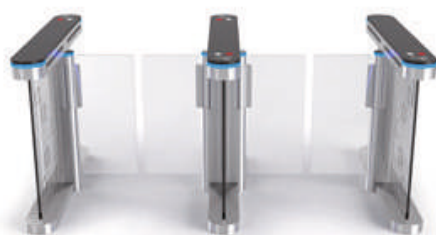
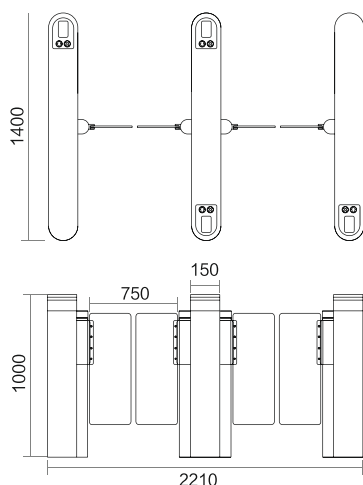


TS-SG-700

Chassis Material	SUS304 Stainless Steel
Chassis Size	1508*160*1019mm(L*W*H)
Door Wing Material	10mm Plexiglass, Tempered Glass
Passage Width	650mm~1000mm
Input Voltage	110V~220V, 50HZ
Opening Speed	Fastest <0.5 Seconds (User Setting)
Passing Speed	20-60 People/Minute
Usage Environment	Indoor
Ambient Temperature	25°C~70°C



Front View



Front View

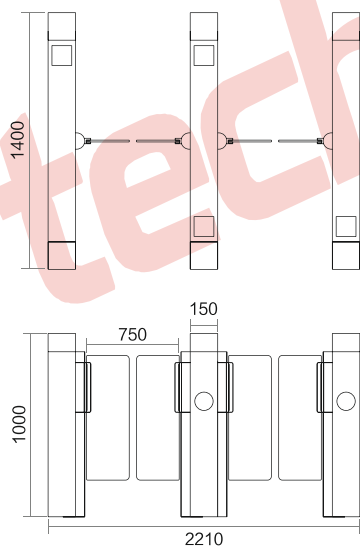


TS-SG-400

Chassis Material	SUS304 Stainless Steel
Chassis Size	1400*150*1000mm(L*W*H)
Door Wing Material	10mm Plexiglass, Tempered Glass
Passage Width	650mm~1000mm
Input Voltage	110V~220V,50HZ
Opening Speed	Fastest <0.5 Seconds (User Setting)
Passing Speed	20-60 People/Minute
Usage Environment	Indoor
Ambient Temperature	25°C~70°C

Application Scenarios

- ◆ Subways, stations, docks, tourist attractions, exhibition venues, communities, factories, construction sites, fitness clubs, office buildings, school libraries, entrance and exit control, access control, consumption management, special passage management and control of enterprises and institutions.



Front View



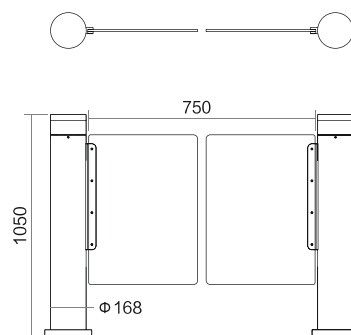
TS-SG-100

Chassis Material	SUS304 Stainless Steel
Chassis Size	1400*150*1000mm(L*W*H)
Door Wing Material	10mm Plexiglass, Tempered Glass
Passage Width	650mm~1000mm
Input Voltage	110V~220V,50HZ
Opening Speed	Fastest <0.5 Seconds (User Setting)
Passing Speed	20-60 People/Minute
Usage Environment	Indoor
Ambient Temperature	25°C~70°C



TS-SG-350

Chassis Material	SUS304 Stainless Steel
Chassis Size	168*168*1050mm(L*W*H)
Door Wing Material	10mm Plexiglass, Tempered Glass
Passage Width	650mm~1600mm
Input Voltage	110V~220V,50HZ
Opening Speed	Fastest <0.5 Seconds (User Setting)
Passing Speed	20-60 People/Minute
Usage Environment	Indoor
Ambient Temperature	25°C~70C



Front View

Intelligent Embedded System



Face Recognition



Fingerprint Recognition



Consumer System



QR Code Recognition

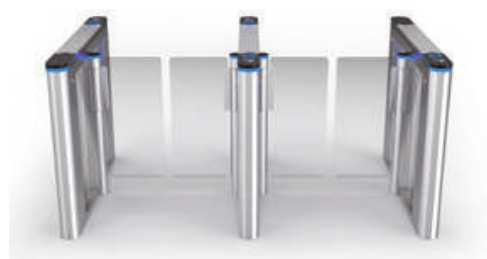
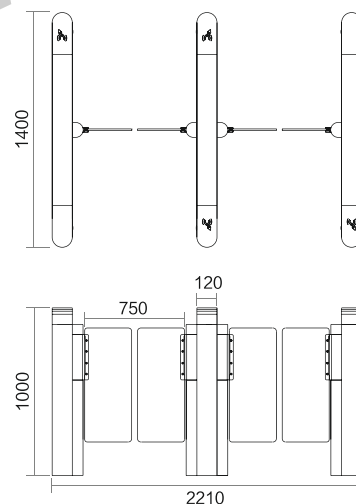


Identity Card Reader

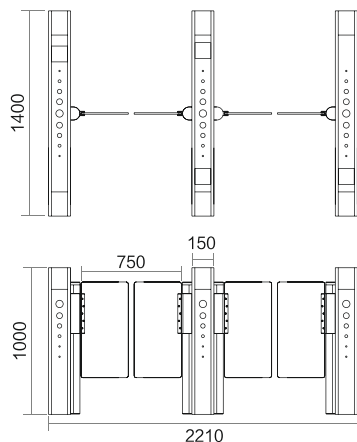


TS-SG-650

Chassis Material	SUS304 Stainless Steel
Chassis Size	1400*120*1000mm(L*W*H)
Door Wing Material	10mm Plexiglass, Tempered Glass
Passage Width	650mm~1000mm
Input Voltage	110V~220V,50HZ
Opening Speed	Fastest <0.5 Seconds (User Setting)
Passing Speed	20-60 People/Minute
Usage Environment	Indoor/Outdoor
Ambient Temperature	25°C~70C



Front View



Front View

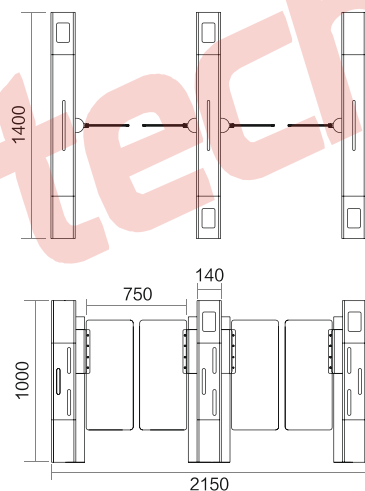


TS-SG-500

Chassis Material	SUS304 Stainless Steel
Chassis Size	1400*150*1000mm(L*W*H)
Door Wing Material	10mm Plexiglass, Tempered Glass
Passage Width	650mm~1000mm
Input Voltage	110V~220V,50HZ
Opening Speed	Fastest <0.5 Seconds (User Setting)
Passing Speed	20-60 People/Minute
Usage Environment	Indoor/Outdoor
Ambient Temperature	25°C~70°C

Application Scenarios

- ◆ Subways, stations, docks, tourist attractions, exhibition venues, communities, factories, construction sites, fitness clubs, office buildings, school libraries, entrance and exit control, access control, consumption management, special passage management and control of enterprises and institutions.



Front View



TS-SG-800

Chassis Material	SUS304 Stainless Steel
Chassis Size	1400*140*1000mm(L*W*H)
Door Wing Material	10mm Plexiglass, Tempered Glass
Passage Width	650mm~1000mm
Input Voltage	110V~220V,50HZ
Opening Speed	Fastest <0.5 Seconds (User Setting)
Passing Speed	20-60 People/Minute
Usage Environment	Indoor
Ambient Temperature	25°C~70°C

Flap Turnstile

Brushless Servo Motor Quick Pass

Supports multi-functional customization such as card swiping,
Face recognition, code scanning recognition,
Ticketing system and construction site system.



Brushless Anti-collision



Silent Buffer



Infrared Anti-pinch



Strong And Reliable



0.2 Seconds

0.2 Second Recognition And Opening

20~60 People

45 People/Min Traffic Speed

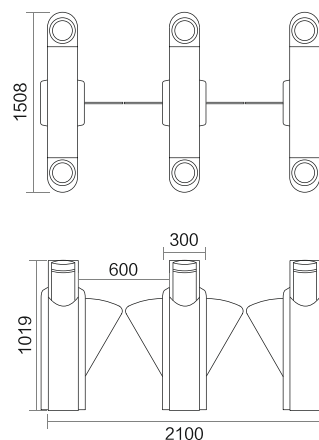
500 times

5 Million Uses



TS-F-400

Chassis Material	SUS304 Stainless Steel
Chassis Size	1508*300*1019mm(L*W*H)
Door Wing Material	15mm Plexiglass, Tempered Glass
Passage Width	550/600mm
Input Voltage	110V~220V, 50HZ
Opening Speed	Fastest <0.5 Seconds (User Setting)
Passing Speed	20-60 People/Minute
Usage Environment	Indoor/Outdoor
Ambient Temperature	25°C~70°C



Front View

Intelligent Embedded System



Face Recognition



Fingerprint Recognition



Consumer System

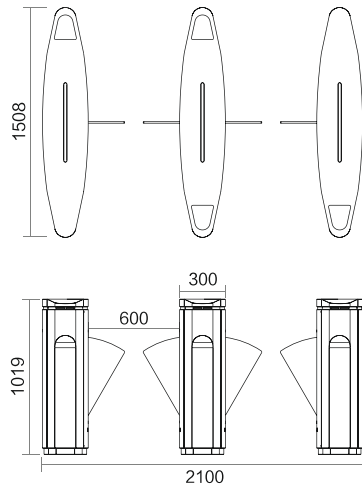


QR Code Recognition



Identity Card Reader





Front View

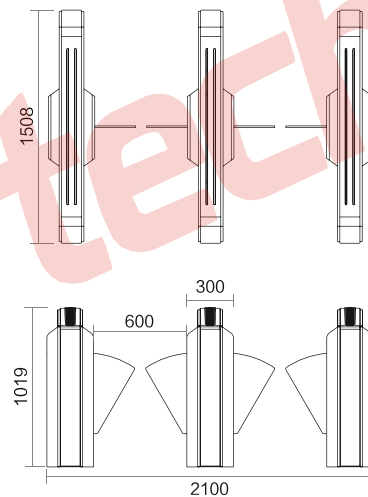


TS-F-600

Chassis Material	SUS304 Stainless Steel
Chassis Size	1508*300*1019mm(L*W*H)
Door Wing Material	15mm Plexiglass, Tempered Glass
Passage Width	600mm
Input Voltage	110V~220V,50HZ
Opening Speed	Fastest <0.5 Seconds (User Setting)
Passing Speed	20-60 People/Minute
Usage Environment	Indoor/Outdoor
Ambient Temperature	25°C~70C

Application Scenarios

- ◆ Subways, stations, docks, tourist attractions, exhibition venues, communities, factories, construction sites, fitness clubs, office buildings, school libraries, entrance and exit control, access control, consumption management, special passage management and control of enterprises and institutions.



Front View



TS-F-700

Chassis Material	SUS304 Stainless Steel
Chassis Size	1508*300*1019mm(L*W*H)
Door Wing Material	15mm Plexiglass, Tempered Glass
Passage Width	600mm
Input Voltage	110V~220V,50HZ
Opening Speed	Fastest <0.5 Seconds (User Setting)
Passing Speed	20-60 People/Minute
Usage Environment	Indoor
Ambient Temperature	25°C~70C

Swing Turnstile

Brushless Servo Motor Quick Pass

Supports multi-functional customization such as card swiping,
Face recognition, code scanning recognition,
Ticketing system and construction site system.



Brushless Anti-collision



Silent Buffer



Infrared Anti-pinch



Strong And Reliable



TS-S-900

0.2 Seconds

0.2 Second Recognition And Opening

20~60 People

45 People/Min Traffic Speed

500 times

5 Million Uses

Functional Characteristics



- ◆ Using a dedicated ARM core microprocessor control circuit and digital positioning technology, the startup and control are smooth and the gate's automatic control capability is more accurate.
- ◆ The system operates smoothly, has low noise, and has a simple and reliable structure.
- ◆ The surface of the movement is treated with anti-rust and anti-corrosion treatment, making it durable.
- ◆ Intelligent voice and sound effect prompts make the device more user-friendly and easier to use.
- ◆ The control panel has a counting function.
- ◆ It can be connected with various equipment such as access control systems, consumer systems, electronic ticket systems, biometric identification systems, and electrostatic testers.
- ◆ The channels will automatically spread out after power off and close automatically when power is turned on.
- ◆ Anti-collision function, the swing arm automatically locks when the gate opening signal is not received.
- ◆ The management computer can be used directly to realize remote control and management.

Intelligent Embedded System



Face Recognition



Fingerprint Recognition



Consumer System



QR Code Recognition

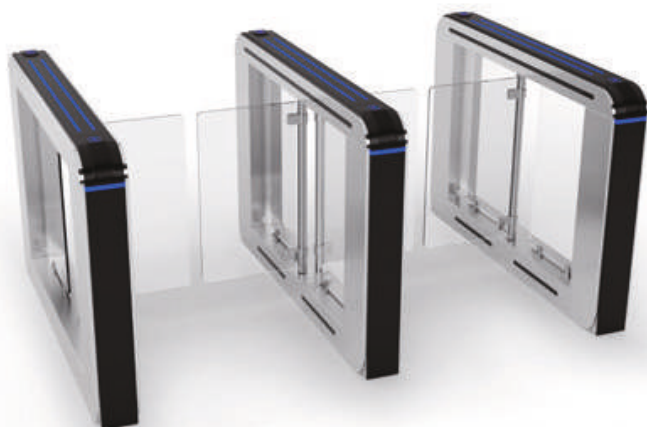


Identity Card Reader

Application Scenarios

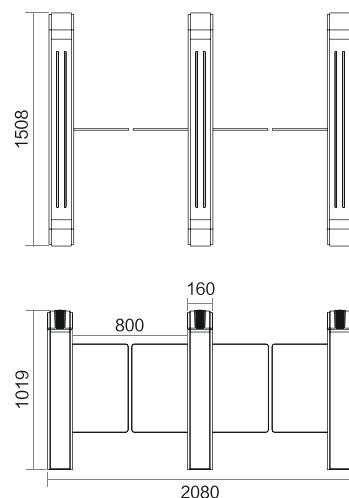
- ◆ Subways, stations, docks, tourist attractions, exhibition venues, communities, factories, construction sites, fitness clubs, office buildings, school libraries, entrance and exit control, access control, consumption management, special passage management and control of enterprises and institutions.





TS-S-700

Chassis Material	SUS304 Stainless Steel
Chassis Size	1508*160*1019mm(L*W*H)
Door Wing Material	10mm Plexiglass, Tempered Glass
Passage Width	≤1000mm
Input Voltage	110V~220V,50HZ
Opening Speed	Fastest <0.5 Seconds (User Setting)
Passing Speed	20-60 People/Minute
Usage Environment	Indoor
Ambient Temperature	25°C~70C



Front View

Intelligent Embedded System



Face Recognition



Fingerprint Recognition



Consumer System



QR Code Recognition

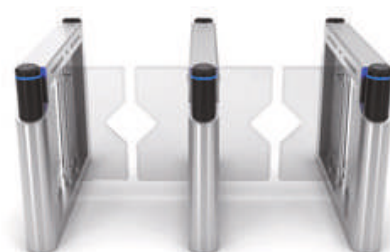
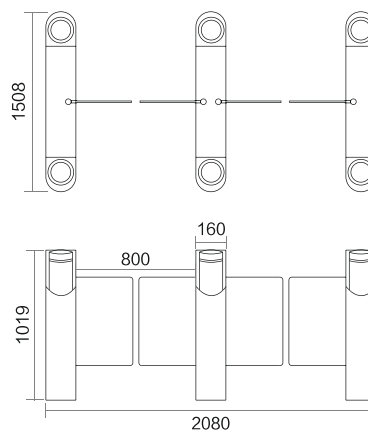


Identity Card Reader

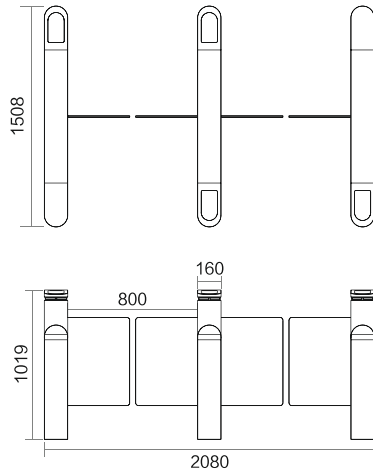


TS-S-400

Chassis Material	SUS304 Stainless Steel
Chassis Size	1508*160*1019mm(L*W*H)
Door Wing Material	10mm Plexiglass, Tempered Glass
Passage Width	≤1000mm
Input Voltage	110V~220V,50HZ
Opening Speed	Fastest <0.5 Seconds (User Setting)
Passing Speed	20-60 People/Minute
Usage Environment	Indoor/Outdoor
Ambient Temperature	25°C~70C



Front View



Front View

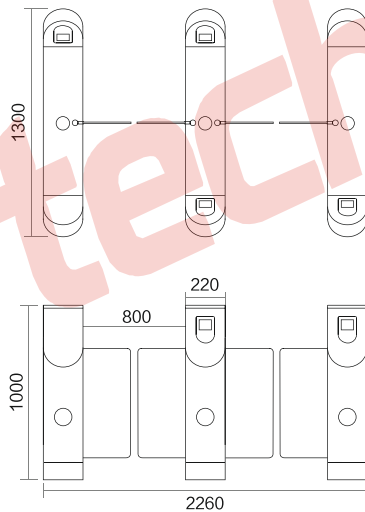


TS-S-500

Chassis Material	SUS304 Stainless Steel
Chassis Size	1508*160*1019mm(L*W*H)
Door Wing Material	10mm Plexiglass, Tempered Glass
Passage Width	≤1000mm
Input Voltage	110V~220V,50HZ
Opening Speed	Fastest <0.5 Seconds (User Setting)
Passing Speed	20-60 People/Minute
Usage Environment	Indoor/Outdoor
Ambient Temperature	25°C~70°C

Application Scenarios

◆ Subways, stations, docks, tourist attractions, exhibition venues, communities, factories, construction sites, fitness clubs, office buildings, school libraries, entrance and exit control, access control, consumption management, special passage management and control of enterprises and institutions.

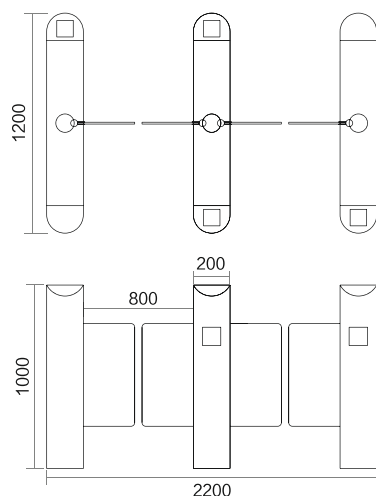


Front View



TS-S-600

Chassis Material	SUS304 Stainless Steel
Chassis Size	1200*220*1000mm(L*W*H)
Door Wing Material	10mm Plexiglass, Tempered Glass
Passage Width	≤900mm
Input Voltage	110V~220V,50HZ
Opening Speed	Fastest <0.5 Seconds (User Setting)
Passing Speed	20-60 People/Minute
Usage Environment	Indoor/Outdoor
Ambient Temperature	25°C~70°C



Front View

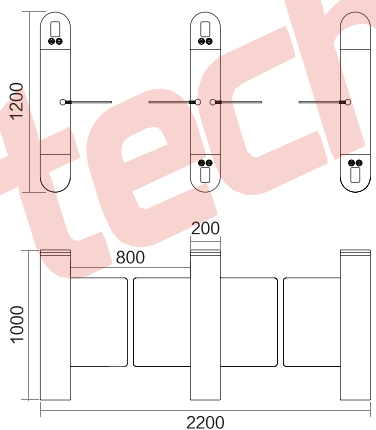


TS-S-450

Chassis Material	SUS304 Stainless Steel
Chassis Size	1200*200*1000mm(L*W*H)
Door Wing Material	10mm Plexiglass, Tempered Glass
Passage Width	≤800mm
Input Voltage	110V~220V,50HZ
Opening Speed	Fastest <0.5 Seconds (User Setting)
Passing Speed	20-60 People/Minute
Usage Environment	Indoor/Outdoor
Ambient Temperature	25°C~70C

Application Scenarios

- ◆ Subways, stations, docks, tourist attractions, exhibition venues, communities, factories, construction sites, fitness clubs, office buildings, school libraries, entrance and exit control, access control, consumption management, special passage management and control of enterprises and institutions.



Front View



TS-S-300

Chassis Material	SUS304 Stainless Steel
Chassis Size	1200*200*1000mm(L*W*H)
Door Wing Material	10mm Plexiglass, Tempered Glass
Passage Width	≤800mm
Input Voltage	110V~220V,50HZ
Opening Speed	Fastest <0.5 Seconds (User Setting)
Passing Speed	20-60 People/Minute
Usage Environment	Indoor/Outdoor
Ambient Temperature	25°C~70C

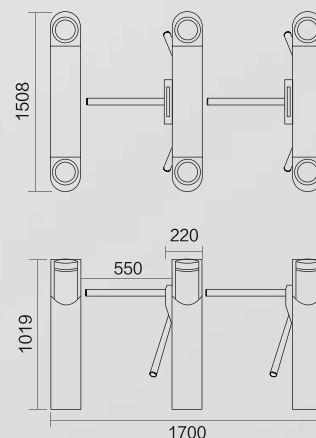
Tripod Turnstile

Brushless Servo Motor Quick Pass

Supports multi-functional customization such as card swiping,
Face recognition, code scanning recognition,
Ticketing system and construction site system.

TS-T-300

Chassis Size: 1508*220*1019mm(L*W*H)



Functional Characteristics



- ◆ Using a dedicated ARM core microprocessor control circuit and digital positioning technology, the startup and control are smooth and the gate's automatic control capability is more accurate.
- ◆ The system operates smoothly, has low noise, and has a simple and reliable structure.
- ◆ The surface of the movement is treated with anti-rust and anti-corrosion treatment, making it durable.
- ◆ Intelligent voice and sound effect prompts make the device more user-friendly and easier to use.
- ◆ The control panel has a counting function.
- ◆ It can be connected with various equipment such as access control systems, consumer systems, electronic ticket systems, biometric identification systems, and electrostatic testers.
- ◆ The channels will automatically spread out after power off and close automatically when power is turned on.
- ◆ Anti-collision function, the swing arm automatically locks when the gate opening signal is not received.
- ◆ The management computer can be used directly to realize remote control and management.

Intelligent Embedded System



Face Recognition



Fingerprint Recognition



Consumer System



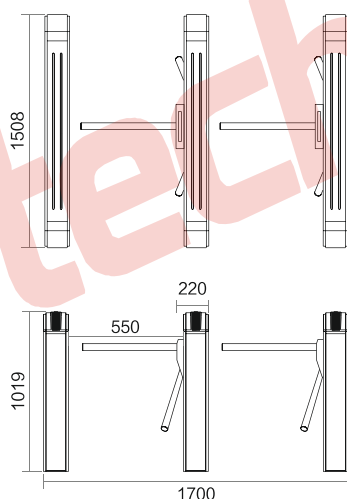
QR Code Recognition



Identity Card Reader

Application Scenarios

- ◆ Subways, stations, docks, tourist attractions, exhibition venues, communities, factories, construction sites, fitness clubs, office buildings, school libraries, entrance and exit control, access control, consumption management, special passage management and control of enterprises and institutions.



Front View



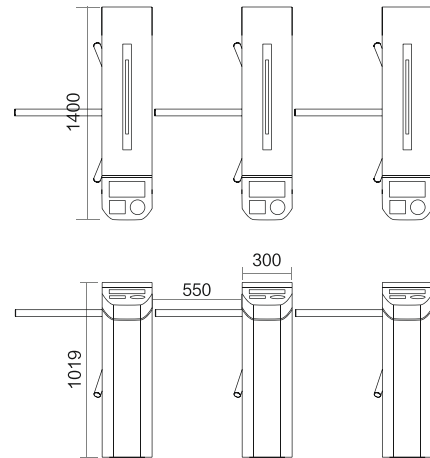
TS-T-900

Chassis Material	SUS304 Stainless Steel
Chassis Size	1508*220*1019mm(L*W*H)
Door Wing Material	SUS304 Stainless Steel
Passage Width	≤550mm
Input Voltage	110V~220V,50HZ
Opening Speed	Fastest <0.5 Seconds (User Setting)
Passing Speed	20-60 People/Minute
Usage Environment	Indoor
Ambient Temperature	25°C~70°C



TS-T-700

Chassis Material	SUS304 Stainless Steel
Chassis Size	1400*300*1019mm(L*W*H)
Door Wing Material	SUS304 Stainless Steel
Passage Width	≤550mm
Input Voltage	110V~220V,50HZ
Opening Speed	Fastest <0.5 Seconds (User Setting)
Passing Speed	20-60 People/Minute
Usage Environment	Indoor/Outdoor
Ambient Temperature	25°C~70C



Front View

Intelligent Embedded System



Face Recognition



Fingerprint Recognition



Consumer System



QR Code Recognition

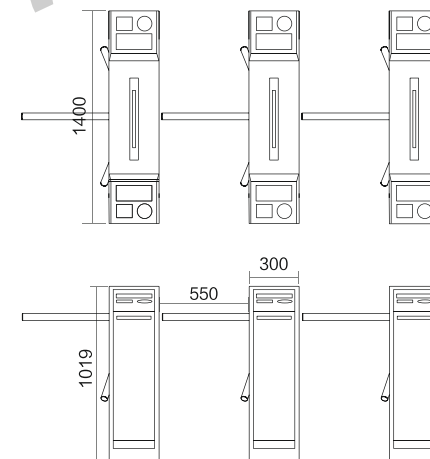


Identity Card Reader

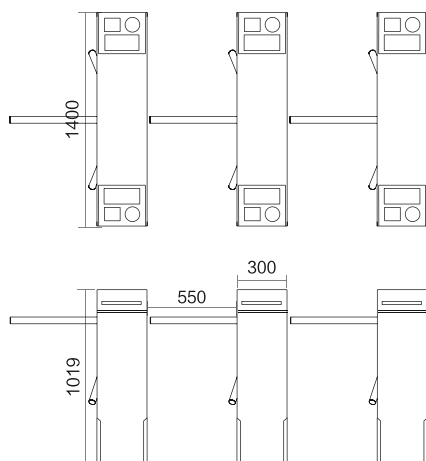


TS-T-600

Chassis Material	SUS304 Stainless Steel
Chassis Size	1400*300*1019mm(L*W*H)
Door Wing Material	SUS304 Stainless Steel
Passage Width	≤550mm
Input Voltage	110V~220V,50HZ
Opening Speed	Fastest <0.5 Seconds (User Setting)
Passing Speed	20-60 People/Minute
Usage Environment	Indoor/Outdoor
Ambient Temperature	25°C~70C



Front View



Front View

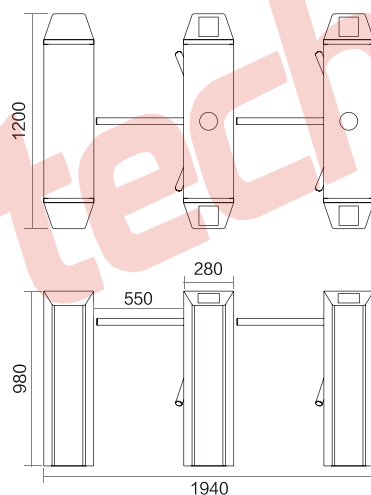


TS-T-500

Chassis Material	SUS304 Stainless Steel
Chassis Size	1400*300*1019mm(L*W*H)
Door Wing Material	SUS304 Stainless Steel
Passage Width	≤550mm
Input Voltage	110V~220V,50HZ
Openning Speed	Fastest <0.5 Seconds (User Setting)
Passing Speed	20-60 People/Minute
Usage Environment	Indoor/Outdoor
Ambient Temperature	25°C~70C

Application Scenarios

- ◆ Subways, stations, docks, tourist attractions, exhibition venues, communities, factories, construction sites, fitness clubs, office buildings, school libraries, entrance and exit control, access control, consumption management, special passage management and control of enterprises and institutions.



Front View



TS-T-250

Chassis Material	SUS304 Stainless Steel
Chassis Size	1200*280*980mm(L*W*H)
Door Wing Material	SUS304 Stainless Steel
Passage Width	≤550mm
Input Voltage	110V~220V,50HZ
Openning Speed	Fastest <0.5 Seconds (User Setting)
Passing Speed	20-60 People/Minute
Usage Environment	Indoor/Outdoor
Ambient Temperature	25°C~70C

Sliding Turnstile

Brushless Servo Motor Quick Pass

Supports multi-functional customization such as card swiping,
Face recognition, code scanning recognition,
Ticketing system and construction site system.



Brushless Anti-collision



Silent Buffer



Infrared Anti-pinch



Strong And Reliable



TS-WGS-300

0.2 Seconds

0.2 Second Recognition And Opening

20~60 People

45 People/Min Traffic Speed

500 times

5 Million Uses

Functional Characteristics



- ◆ Using a dedicated ARM core microprocessor control circuit and digital positioning technology, the startup and control are smooth and the gate's automatic control capability is more accurate.
- ◆ The system operates smoothly, has low noise, and has a simple and reliable structure.
- ◆ The surface of the movement is treated with anti-rust and anti-corrosion treatment, making it durable.
- ◆ Intelligent voice and sound effect prompts make the device more user-friendly and easier to use.
- ◆ The control panel has a counting function.
- ◆ It can be connected with various equipment such as access control systems, consumer systems, electronic ticket systems, biometric identification systems, and electrostatic testers.
- ◆ The channels will automatically spread out after power off and close automatically when power is turned on.
- ◆ Anti-collision function, the swing arm automatically locks when the gate opening signal is not received.
- ◆ The management computer can be used directly to realize remote control and management.

Intelligent Embedded System



Face Recognition



Fingerprint Recognition



Consumer System



QR Code Recognition

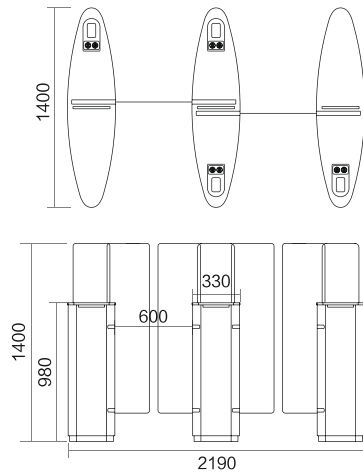


Identity Card Reader

Application Scenarios

- ◆ Subways, stations, docks, tourist attractions, exhibition venues, communities, factories, construction sites, fitness clubs, office buildings, school libraries, entrance and exit control, access control, consumption management, special passage management and control of enterprises and institutions.





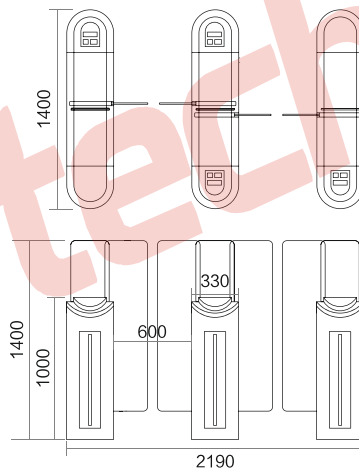
Front View

TS-WGS-400

Chassis Material	SUS304 Stainless Steel
Chassis Size	1400*330*980mm(L*W*H)
Door Wing Material	10mm Plexiglass, Tempered Glass
Passage Width	≤600mm
Input Voltage	110V~220V,50HZ
Opening Speed	Fastest <0.5 Seconds (User Setting)
Passing Speed	20-60 People/Minute
Usage Environment	Indoor/Outdoor
Ambient Temperature	25°C~70°C

Application Scenarios

◆ Subways, stations, docks, tourist attractions, exhibition venues, communities, factories, construction sites, fitness clubs, office buildings, school libraries, entrance and exit control, access control, consumption management, special passage management and control of enterprises and institutions.



Front View

TS-WGS-300

Chassis Material	SUS304 Stainless Steel
Chassis Size	1400*330*1000mm(L*W*H)
Door Wing Material	10mm Plexiglass, Tempered Glass
Passage Width	≤600mm
Input Voltage	110V~220V,50HZ
Opening Speed	Fastest <0.5 Seconds (User Setting)
Passing Speed	20-60 People/Minute
Usage Environment	Indoor/Outdoor
Ambient Temperature	25°C~70°C

Waist/Full Height Turnstile

Careful Selection Of Materials/Exquisite Craftsmanship

Material/thickness/color/size can be customized

Supports multi-functional customization such as card swiping,
Face recognition, code scanning recognition,
Ticketing system and construction site system.



TS-TFH-900

Functional Characteristics



- ◆ Using a dedicated ARM core microprocessor control circuit and digital positioning technology, the startup and control are smooth and the gate's automatic control capability is more accurate.
- ◆ The system operates smoothly, has low noise, and has a simple and reliable structure.
- ◆ The surface of the movement is treated with anti-rust and anti-corrosion treatment, making it durable.
- ◆ Intelligent voice and sound effect prompts make the device more user-friendly and easier to use.
- ◆ The control panel has a counting function.
- ◆ It can be connected with various equipment such as access control systems, consumer systems, electronic ticket systems, biometric identification systems, and electrostatic testers.
- ◆ The channels will automatically spread out after power off and close automatically when power is turned on.
- ◆ Anti-collision function, the swing arm automatically locks when the gate opening signal is not received.
- ◆ The management computer can be used directly to realize remote control and management.

Intelligent Embedded System



Face Recognition



Fingerprint Recognition



Consumer System



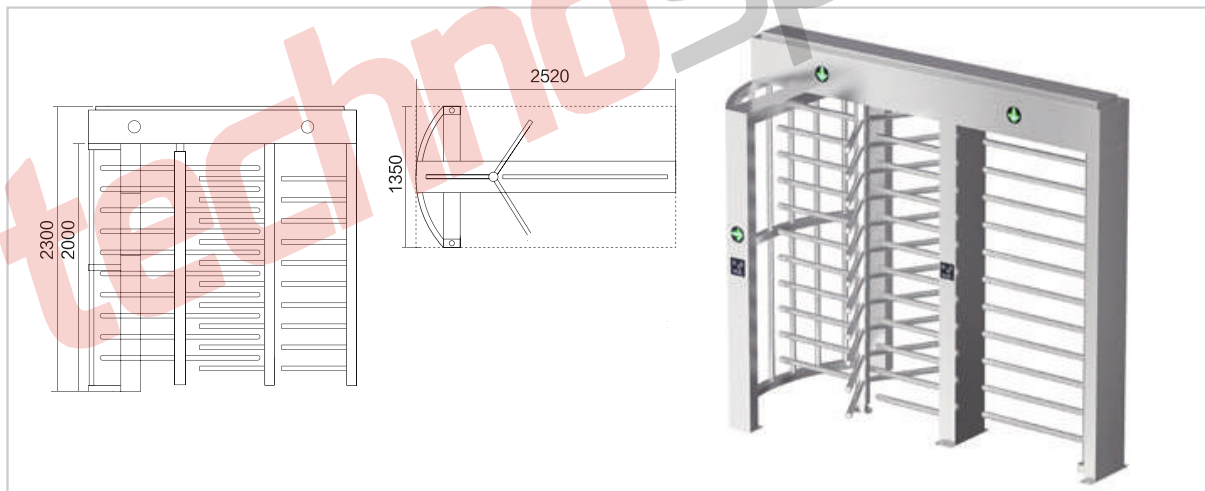
QR Code Recognition



Identity Card Reader

Application Scenarios

Full-height turnstiles are suitable for unattended and high security requirements, as well as some outdoor occasions, such as sports venues, construction sites, prisons, airports, office buildings, factories, scenic spots, stations, etc.

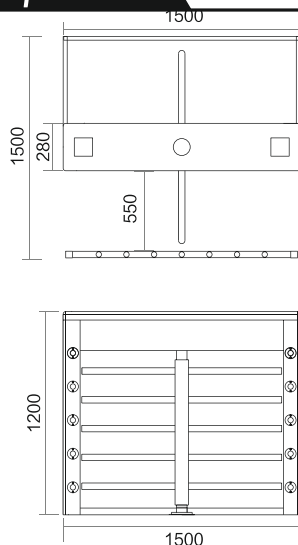


TS-TFH-900



Front View

Chassis Material	SUS304 Stainless Steel
Chassis Size	1350*2520*2300mm(L*W*H)
Door Wing Material	SUS304 Stainless Steel
Passage Width	≤650mm
Input Voltage	110V~220V,50HZ
Opening Speed	Fastest <0.5 Seconds (User Setting)
Passing Speed	20-60 People/Minute
Usage Environment	Indoor/Outdoor
Ambient Temperature	25°C~70°C



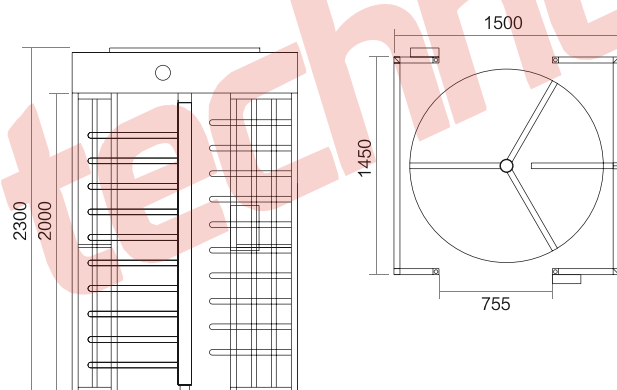
Front View

TS-TFH-300

Chassis Material	SUS304 Stainless Steel
Chassis Size	1500*1500*1200mm(L*W*H)
Door Wing Material	SUS304 Stainless Steel
Passage Width	≤550mm
Input Voltage	110V~220V,50HZ
Opening Speed	Fastest <0.5 Seconds (User Setting)
Passing Speed	20-60 People/Minute
Usage Environment	Indoor/Outdoor
Ambient Temperature	25°C~70°C

Application Scenarios

◆ Full-height turnstiles are suitable for unattended and high security requirements, as well as some outdoor occasions, such as sports venues, construction sites, prisons, airports, office buildings, factories, scenic spots, stations, etc.

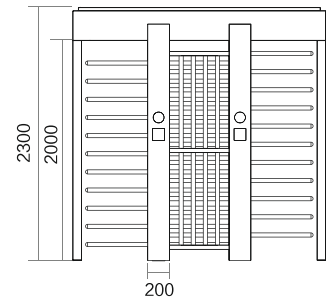
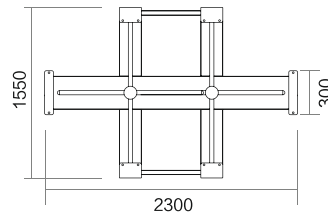


Front View



TS-TFH-600

Chassis Material	SUS304 Stainless Steel
Chassis Size	1450*1500*2300mm(L*W*H)
Door Wing Material	SUS304 Stainless Steel
Passage Width	≤650mm
Input Voltage	110V~220V,50HZ
Opening Speed	Fastest <0.5 Seconds (User Setting)
Passing Speed	20-60 People/Minute
Usage Environment	Indoor/Outdoor
Ambient Temperature	25°C~70°C



TS-TFH-700

Chassis Material	SUS304 Stainless Steel
Chassis Size	1550*2300*2300mm(L*W*H)
Door Wing Material	SUS304 Stainless Steel
Passage Width	≤650mm
Input Voltage	110V~220V,50HZ
Opening Speed	Fastest <0.5 Seconds (User Setting)
Passing Speed	20-60 People/Minute
Usage Environment	Indoor/Outdoor
Ambient Temperature	25°C~70C



Front View

Intelligent Embedded System



Face Recognition



Fingerprint Recognition



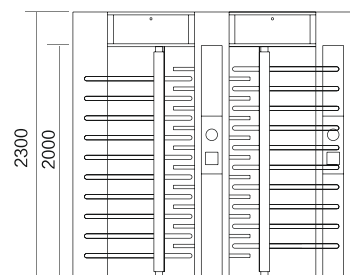
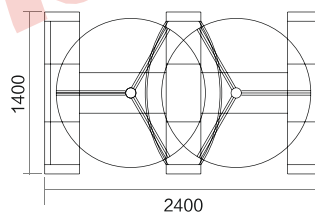
Consumer System



QR Code Recognition

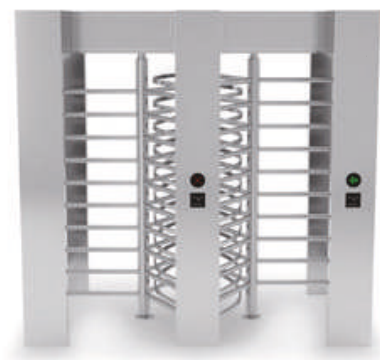


Identity Card Reader

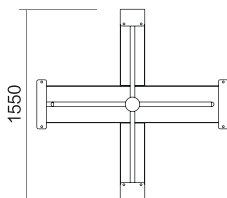
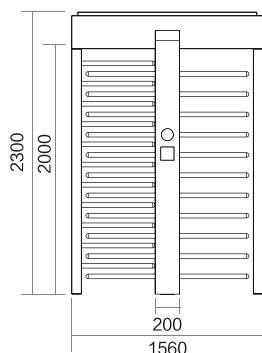


TS-TFH-1400

Chassis Material	SUS304 Stainless Steel
Chassis Size	1400*2400*2300mm(L*W*H)
Door Wing Material	SUS304 Stainless Steel
Passage Width	≤650mm
Input Voltage	110V~220V,50HZ
Opening Speed	Fastest <0.5 Seconds (User Setting)
Passing Speed	20-60 People/Minute
Usage Environment	Indoor/Outdoor
Ambient Temperature	25°C~70C



Front View



TS-TFH-750

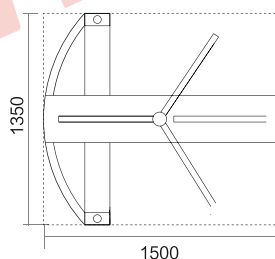
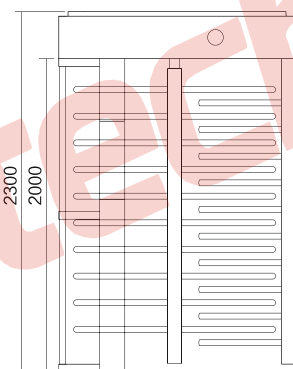
Chassis Material	SUS304 Stainless Steel
Chassis Size	1550*1560*2300mm(L*W*H)
Door Wing Material	SUS304 Stainless Steel
Passage Width	≤650mm
Input Voltage	110V~220V,50HZ
Opening Speed	Fastest <0.5 Seconds (User Setting)
Passing Speed	20-60 People/Minute
Usage Environment	Indoor/Outdoor
Ambient Temperature	25°C~70C



Front View

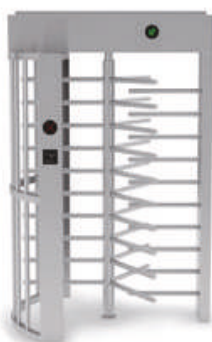
Application Scenarios

- ◆ Full-height turnstiles are suitable for unattended and high security requirements, as well as some outdoor occasions, such as sports venues, construction sites, prisons, airports, office buildings, factories, scenic spots, stations, etc.



TS-TFH-200

Chassis Material	SUS304 Stainless Steel
Chassis Size	1350*1500*2300mm(L*W*H)
Door Wing Material	SUS304 Stainless Steel
Passage Width	≤650mm
Input Voltage	110V~220V,50HZ
Opening Speed	Fastest <0.5 Seconds (User Setting)
Passing Speed	20-60 People/Minute
Usage Environment	Indoor/Outdoor
Ambient Temperature	25°C~70C



Front View

License Plate Recognition System

The lane display screen can display the license plate, amount, balance, Chinese character information and voice prompts, etc., and also has functions such as controlling traffic lights. Lane display screens are widely used in toll collection systems such as high-grade highway toll stations and parking lots.

TS-LPR-1

Technical Parameters:

Product Size: 220*140*1400mm(L*W*H)

Input Voltage: DC12V54

LED Viewing Angle: $\pm 3^\circ \times \pm 20^\circ$

Working Temperature: $-20 \sim 65^\circ\text{C}$

Storage Temperature: $-20 \sim 65^\circ\text{C}$

Font Capacity: national standard level two font, maximum 16384 Chinese characters

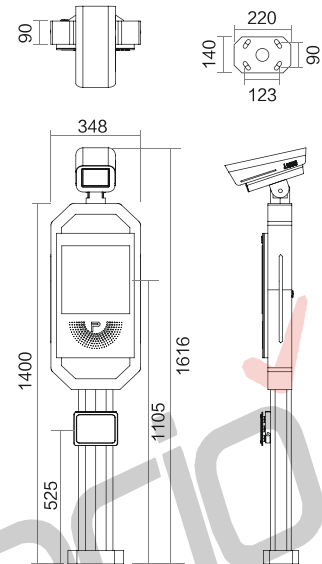
Text Display: automatic switching between horizontal and vertical display

Text Display Mode: upward movement, horizontal movement, fixed display, three-color display

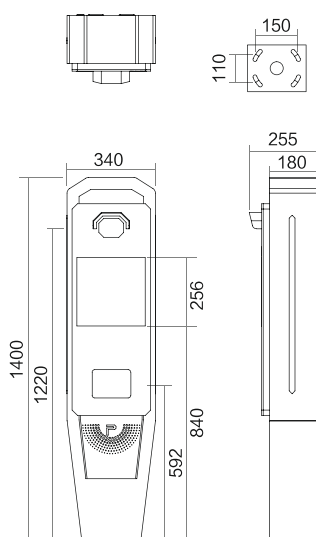
Audio Output: real-person pronunciation voice broadcast

Data Communication: 485 communication circuit, industrial-grade lightning protection design

Protection Level: IP55



License Plate Recognition System



TS-LPR-2

Technical Parameters:

Product Size: 255*340*1400mm(L*W*H)

Input Voltage: DC12V54

LED Viewing Angle: $\pm 3g^{\circ} \times \pm 20$

Working Temperature: -20-65 $^{\circ}$ C

Storage Temperature: -20-65 $^{\circ}$ C

Font Capacity: national standard level two font, maximum 16384 Chinese characters

Text Display: automatic switching between horizontal and vertical display

Text Display Mode: upward movement, horizontal movement, fixed display, three-color display

Audio Output: real-person pronunciation voice broadcast

Data Communication: 485 communication circuit, industrial-grade lightning protection design

Protection Level: IP55





TS-B-400

Technical Parameters

Chassis Size	320mm×280mm×980mm
Motor Power	160w
Motor Working Voltage	DC Brushless 24V
Input Power	110/220V
Landing Rod Speed	1.5-6S
Rod Length	Customize

- ◆ **Suitable places:** residential areas, corporate units, places with pedestrian restrictions
- ◆ **Surface:** Advanced outdoor paint
- ◆ Full support for fully automatic intelligent toll collection system

Brushless DC, Intelligent Control

- ◆ Appearance design, unique
- ◆ Equipped with practical systems and durable
- ◆ Adjustable left and right/just add holes to install crank arm rods and fences
- ◆ The fence can be up to 6 meters long, and the straight pole or curved arm can be up to 6 meters long.



90° Crank Arm



180° Crank Arm



Fence Gate





TS-B-500

Technical Parameters

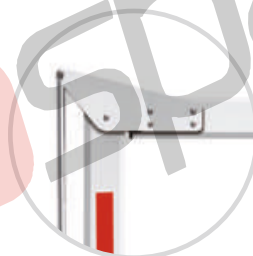
Chassis Size	330mm×280mm×1020mm
Motor Power	200W
Motor Working Voltage	DC Servo Motor 24V
Input Power	110/220V
Landing Rod Speed	0.9-6s
Rod Length	Customize

- ◆ **Suitable places:** residential areas, corporate units, places with pedestrian restrictions
- ◆ **Surface:** Advanced outdoor paint
- ◆ Full support for fully automatic intelligent toll collection system

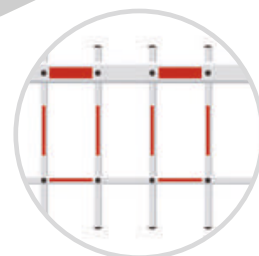
Optional Gate Pole



180° Crank Arm



90° Crank Arm



Fence Gate



TS-B-850

Technical Parameters

Chassis Size	320mm×260mm×980mm
Motor Power	750W
Motor Working Voltage	DC Servo Motor 24V
Input Power	110/220V
Landing Rod Speed	0.2-3s
Rod Length	Customize

- ◆ **Suitable places:** residential areas, corporate units, places with pedestrian restrictions
- ◆ **Surface:** Advanced outdoor paint
- ◆ Full support for fully automatic intelligent toll collection system



TS-B-450

Technical Parameters

Chassis Size	330mm×280mm×1020mm
Motor Power	150W
Motor Working Voltage	DC Brushless 24V
Input Power	110/220V
Landing Rod Speed	2.5s to 6s
Rod Length	Customize

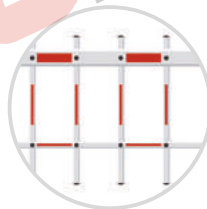
- ◆ **Suitable places:** residential areas, corporate units, places with pedestrian restrictions
- ◆ **Surface:** Advanced outdoor paint
- ◆ Full support for fully automatic intelligent toll collection system



180° Crank Arm



90° Crank Arm



Fence Gate



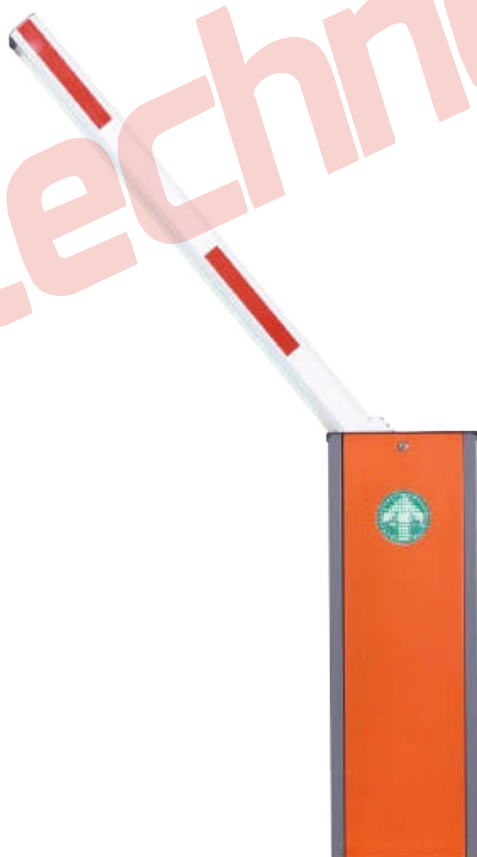


TS-B-600

Technical Parameters

Chassis Size	330mm×280mm×1020mm
Motor Power	200W /400W
Motor Working Voltage	DC Brushless 24V
Input Power	110/220V
Landing Rod Speed	0.6s,0.9s
Rod Length	Customize

- ◆ **Suitable places:** residential areas, corporate units, places with pedestrian restrictions
- ◆ **Surface:** Advanced outdoor paint
- ◆ Full support for fully automatic intelligent toll collection system



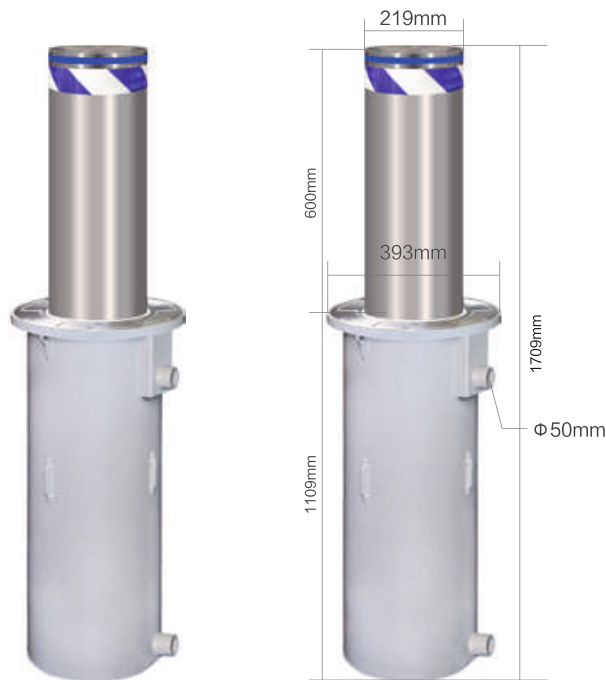
TS-B-300

Technical Parameters

Chassis Size	330mm×280mm×1020mm
Motor Power	150W
Motor Working Voltage	DC Brushless 24V
Input Power	110/220V
Landing Rod Speed	1.5s-8s
Rod Length	Customize

- ◆ **Suitable places:** residential areas, corporate units, places with pedestrian restrictions
- ◆ **Surface:** Advanced outdoor paint
- ◆ Full support for fully automatic intelligent toll collection system

Fully automatic Rising Bollards



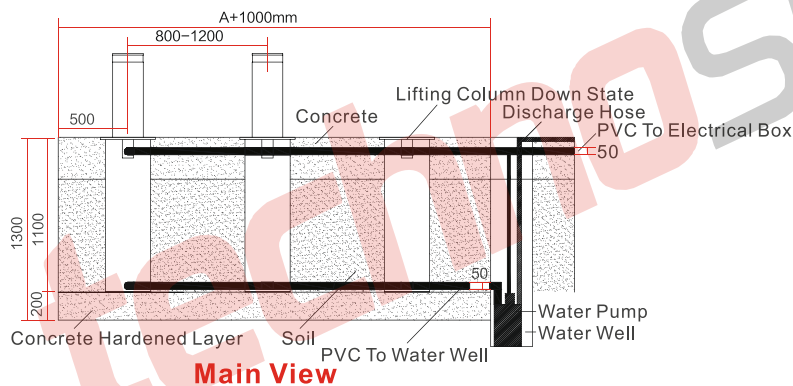
Features:

- ◆ Can be used normally after withstanding the passage of a 100-ton vehicle.
- ◆ Waterproof grade P68, it can still be used normally even after being soaked in water.
- ◆ The structure is sturdy and durable, the outlet and drain outlet are made of 4m thick carbon steel, and the outer barrel is designed with 4 welding bars.
- ◆ Using 5CM bright reflective film, the reflectivity is over 90%.
- ◆ Optional high-brightness LED warning light bar can effectively enhance the nighttime warning effect.
- ◆ The panel adopts anti-slip pattern design, and the thickness is optional 10mm/6mm.
- ◆ The top of the column is 10mm/6mm thick, and non-standard support is accepted for customization. The diameter, thickness, height, appearance, speed, etc. of the lifting column can be customized.
- ◆ The lifting can be controlled in conjunction with other equipment such as license plate recognition, barrier gates, access control, infrared, radar, ground sensing, traffic light tidal lanes, fire alarm systems, etc.
- ◆ Supports the cloud platform management system to control the lifting column, and combines the mobile APP to remotely control the rise and fall of the lifting column.

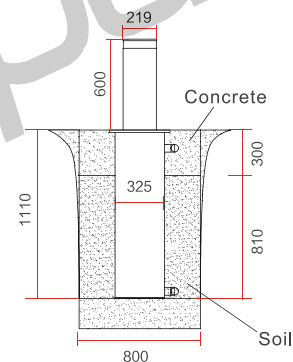
Application Scenarios:

Traffic light intersection/subway property/government unit/real estate company/gas company/shopping mall supermarket/entertainment venue/farmer's market/hotel KTV! Cultural town/tourist attraction/sports venue/road isolation/tidal lane/border intersection/chemical plant/parking lot /Industrial Park/Villa Area/Pedestrian Street/Checkpoint/Oil Station/Power Plant/Water Plant/Hospital/Prison/School

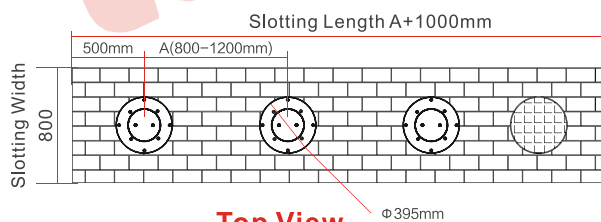
TS-RB-01



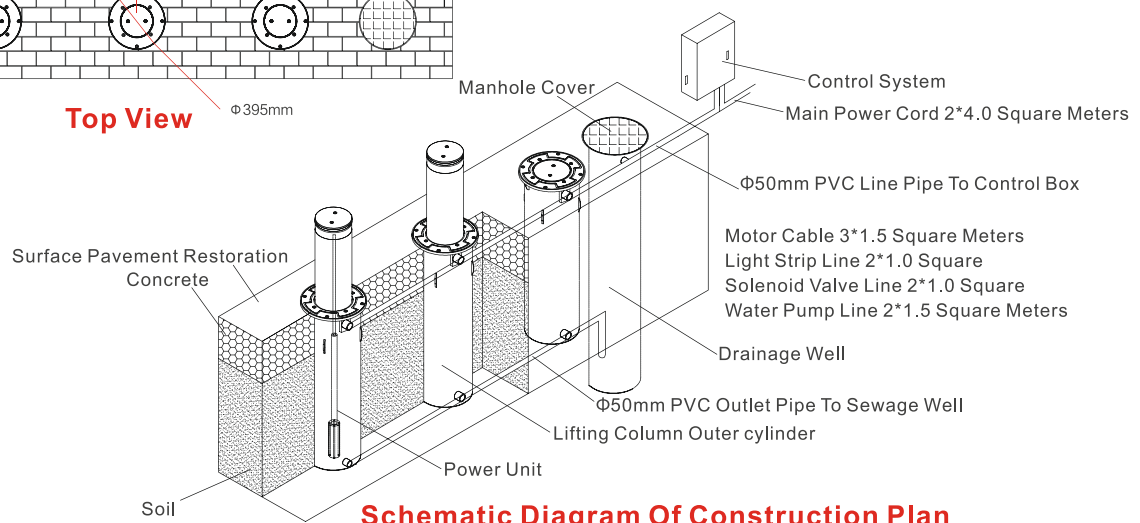
Main View



Left View



Top View



Schematic Diagram Of Construction Plan

Shallow buried Rising Bollards

Features:

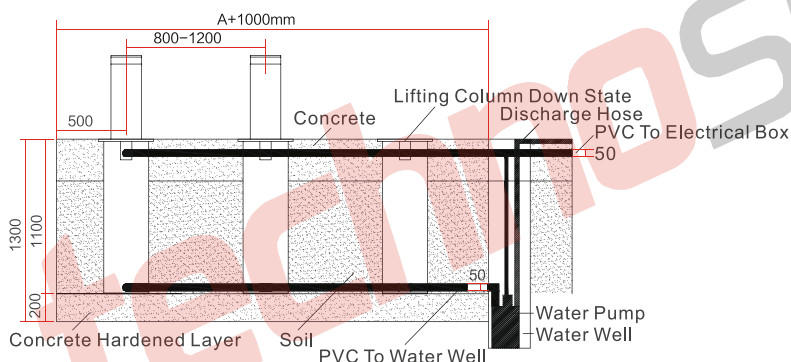
- ◆ Can be used normally after withstanding the passage of a 100-ton vehicle.
- ◆ Waterproof grade P68, it can still be used normally even after being soaked in water.
- ◆ The structure is sturdy and durable, the outlet and drain outlet are made of 4m thick carbon steel, and the outer barrel is designed with 4 welding bars.
- ◆ Using 5CM bright reflective film, the reflectivity is over 90%.
- ◆ Optional high-brightness LED warning light bar can effectively enhance the nighttime warning effect.
- ◆ The panel adopts anti-slip pattern design, and the thickness is optional 10mm/6mm.
- ◆ The top of the column is 10mm/6mm thick, and non-standard support is accepted for customization. The diameter, thickness, height, appearance, speed, etc. of the lifting column can be customized.
- ◆ The lifting can be controlled in conjunction with other equipment such as license plate recognition, barrier gates, access control, infrared, radar, ground sensing, traffic light tidal lanes, fire alarm systems, etc.
- ◆ Supports the cloud platform management system to control the lifting column, and combines the mobile APP to remotely control the rise and fall of the lifting column.

Application Scenarios:

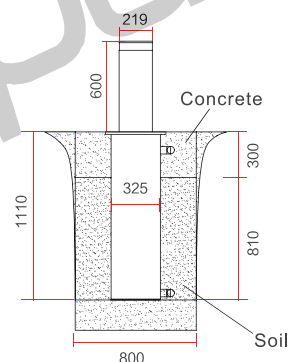
Traffic light intersection/subway property/government unit/real estate company/gas company/shopping mall
supermarket/entertainment venue/farmer's market/hotel KTV!
Cultural town/tourist attraction/sports venue/road isolation/tidal lane/border intersection/chemical plant/parking lot /Industrial Park/Villa Area/Pedestrian Street/Checkpoint/Oil Station/Power Plant/Water Plant/Hospital/Prison/School



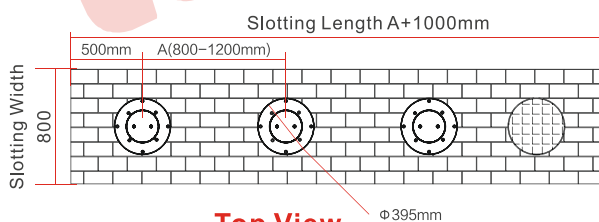
TS-RB-01



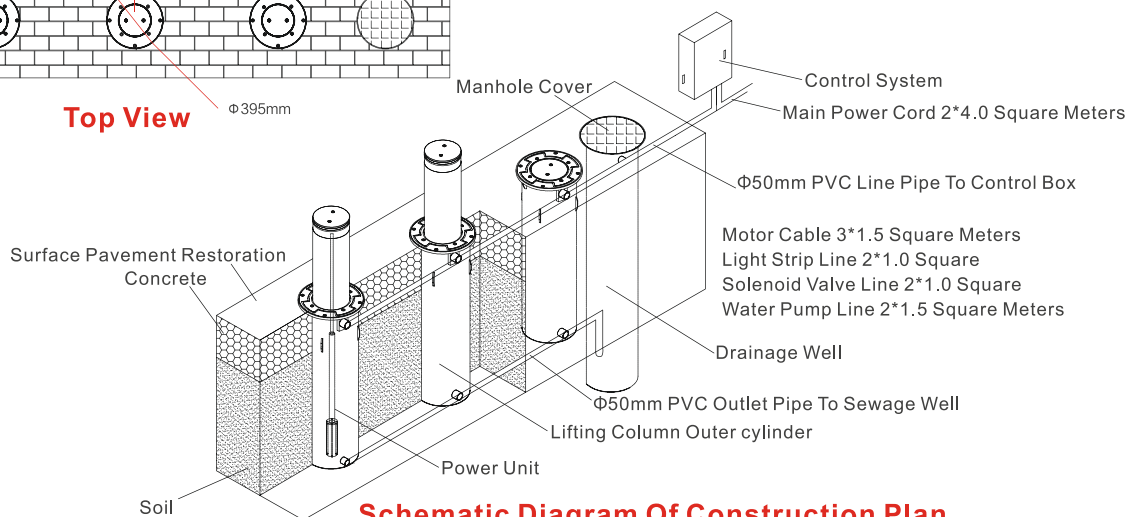
Main View



Left View



Top View



Schematic Diagram Of Construction Plan



AI05-RF-FP

Type: AI05-RF-FP

Screen Size: 5" IPS LCD (Options: 10.1"/15.6"/21.5")

Resolution: 1280x800

Camera: Dual (200W RGB + 130W Infrared), Wide Dynamic Range, 4mm Aperture, 0-2m Focal Length, Automatic White Balance

Core: RK3568 Quad-Core (Option: RK3399 Hexa-Core)

Memory: 2GB RAM (4GB optional), 16GB RM (Options: 32GB/64GB)

Accessories: LED Light, Optional RFID/QR Reader, Fingerprint, Temperature Test

Network: Wired, 2.4G Wi-Fi (4G optional)

Interfaces: Ethernet, WiFi, USB2.0, RS232/RS485, Wiegand, Relay Output, Reset Interface, RJ45

Features: Facial Recognition (20K users), RFID and Fingerprint Support (20K each), Event Capacity (100K+), Recognition Speed $\leq 150\text{ms}$, Recognition Distance 0.5-4m

Protection Level: IP42 (Dust and Water-resistant)

Power Supply: DC12V ($\pm 10\%$)

Operating Conditions: -10°C to 60°C , 10% to 90% Humidity

Power Consumption: 10W Max

Installation: Turnstile, Wall, Desktop, Floor

Size: 196.7x92x16.25mm

Weight: 0.5KG



AI08

Type: Ai08

Screen: 8" IPS LCD (Opt: 10.1"/15.6"/21.5"), 1280x800

Camera: Dual (200W RGB, 130W Infrared), Wide Dynamic, 0-2m Range

Core: RK3568 Quad-Core (Opt: RK3399 Hexa-Core), 2GB RAM (4GB opt), 16GB Storage (Opt: 32GB/64GB)

Network: Wired, 2.4G Wi-Fi (4G opt)

Interfaces: Ethernet, WiFi, USB2.0, RS232/RS485, Wiegand

Features: 20K Facial Recognition, 100K+ Event Capacity, $\leq 150\text{ms}$ Speed

Protection: IP64

Power: DC12V

Operating: -10°C to 60°C , 10-90% Humidity

Size: 234x125x24.5mm

Weight: 1.5KG



AI08RF

Type: AI08RF

Screen: 8" IPS LCD (Opt: 10.1"/15.6"/21.5"), 1280x800

Camera: Dual (200W RGB, 130W Infrared), Wide Dynamic, 0-2m Range

Core: RK3568 Quad-Core (Opt: RK3399 Hexa-Core), 2GB RAM (4GB opt), 16GB Storage (Opt: 32GB/64GB)

Network: Wired, 2.4G Wi-Fi (4G opt)

Interfaces: Ethernet, WiFi, USB2.0, RS232/RS485, Wiegand

Features: 20K User Capacity (Face, Card), 100K+ Event Capacity, $\leq 150\text{ms}$ Speed

Protection: IP64

Power: DC12V

Operating: -10°C to 60°C , 10-90% Humidity

Size: 234x125x24.5mm

Weight: 1.5KG



AI08-RF-FP

Type: AI08-RF-FP

Screen: 8" IPS LCD (Opt: 10.1"/15.6"/21.5"), 1280x800

Camera: Dual (200W RGB, 130W Infrared), Wide Dynamic, 0-2m Range

Core: RK3568 Quad-Core (Opt: RK3399 Hexa-Core), 2GB RAM (4GB opt), 16GB Storage (Opt: 32GB/64GB)

Network: Wired, 2.4G Wi-Fi (4G opt)

Interfaces: Ethernet, WiFi, USB2.0, RS232/RS485, Wiegand

Features: 20K Users (Face, RFID, Fingerprint), 100K+ Event Capacity, $\leq 150\text{ms}$ Speed, Enhanced Memory for 4GB Version

Protection: IP42

Power: DC12V

Operating: -10°C to 60°C , 10-90% Humidity

Size: 234x125x24.5mm

Weight: 1.5KG



AI08R-PV

Type: AI08R-PV

Screen: 8" IPS LCD (Opt: 10.1"/15.6"/21.5"), 1280x800

Camera: Dual (200W RGB, 130W Infrared), Wide Dynamic, 0-2m Range

Core: RK3568 Quad-Core (Opt: RK3399 Hexa-Core), 2GB RAM (4GB opt), 16GB Storage (Opt: 32GB/64GB)

Network: Wired, 2.4G Wi-Fi (4G opt)

Interfaces: Ethernet, WiFi, USB2.0, RS232/RS485, Wiegand

Features: 20K User Capacity (Face, RFID, Palm Print), 100K+ Event Capacity, $\leq 150\text{ms}$ Speed

Protection: IP42

Power: DC12V

Operating: -10°C to 60°C , 10-90% Humidity

Size: 234x125x24.5mm

Weight: 1.5KG

TS 6040

General Specifications

Tunnel Size : 600(W)X400(H)mm;
 Conveyor Speed: 0.22m/s
 Conveyor Max Load: 150 kg
 Single inspection dosage: <1.01 μ Gy
 Leakage radiation: <0.06 μ Gy/h
 Wire Resolution: 40AWG
 Steel Penetration: 34 mm
 Film Safety: For ISO 1600

X-ray Generator

Orientation: Upward
 Tube Current: 0.2-1.25mA (adjustable)
 Anode Voltage: 80-160KV (adjustable)
 Angle: 80°
 Generator cooling/working periods:
 Sealed oil bath with forced air/100%

Operating Environment

Storage Temperature: -20°C to 60°C
 Operating Temperature: 0°C to 45°C
 Relative Humidity:
 20 to 95% non-condensing
 System Power: 220 VAC ($\pm 10\%$) 50 ± 3 Hz
 Power wastage: 1.0 KW (Max)
 Noise < 55dB

X-RAY Sensor: L-shaped array detector, 24bit

Application:

Railway , Court , meetings , exhibition , electronics factory , hotel,
 Entertainment, Prison, etc. . .

Main Accessories:

1. A 19 inch color LCD display
2. Part of tools



TS100100

Technical Specifications

Tunnel Size: 1000(W)X1000(H)mm
 Power Requirement: 220V AC ($\pm 10\%$) 50 ± 3 Hz
 Power consumption: 1.0KW (Max)
 Noise level: <58dB
 Conveyor Speed: 0.22m/s
 Conveyor Max Load: 250 kg
 Wire Resolution: 38AWG
 Spatial Resolution: 1.0mm Horizontal and Vertical
 Steel Penetration: 38mm
 Single inspection dosage: < 1.6 μ Gy
 Leakage radiation: <0.2 μ Gy/h
 Film Safety: Guarantee ISO1600 Film

Application

Railway, highway, post office, logistics, huge-scale meetings, activities...etc





TS5030

General Specifications

Tunnel Size : 500 (W) × 300 (H) mm
 Conveyor Speed: 0.22m/s
 Conveyor Max Load: 150 kg
 Single inspection dosage: < 1.32μGy
 Wire Resolution: 40AWG
 Steel Penetration: 10MM
 Film Safety: For ISO 1600
X-ray Sensor: L-shaped array detector, 24bit

Application

Railway , Court , meetings , exhibition , factory , hotel
 Entertainment , Prison etc...



TS6550

General Specifications

Tunnel Size : 650 (W) × 500 (H) mm
 Conveyor Speed: 0.22m/s
 Conveyor Max Load: 170 kg
 Wire Resolution: 40AWG
 Steel Penetration: 40mm
 Single inspection dosage: < 1.2μGy
 Leakage radiation: < 0.1μGy/h
 Film Safety: Guarantee ISO1600 Film
X-ray Sensor: L-shaped array detector

Application

railway , Court , meetings , exhibition , factory , hotel
 Entertainment , Prison etc...



TS8065

General Specifications

Tunnel Size : 800(W)×650(H)mm
 Conveyor Speed: 0.22m/s
 Conveyor Max Load: 200 kg
 Single inspection dosage: < 1.15μGy
 Leakage radiation: < 0.14μGy/h
 Wire Resolution: 40AWG
 Steel Penetration: 38mm
 Film Safety: For ISO 1600
X-RAY Sensor: L-shaped array detector, 24bit

Application

Railway , highway , post office , exhibition , huge-scale
 meetings , activities etc...



TS10080

General Specifications

Tunnel Size : 1000(W)×800(H)mm
 Conveyor Speed: 0.22m/s
 Conveyor Max Load: 230 kg
 Single inspection dosage: < 1.5μGy
 Leakage radiation: < 0.2μGy/h
 Wire Resolution: 38AWG
 Steel Penetration: 38MM armor plate
 Film Safety: For ISO 1600
X-ray Sensor: L-shaped array detector 24bit

Application

Railway , highway , logistics , exhibition centre , huge-scale
 meetings , activities etc...

UVSS mobile type



Feature

- ◆ Automatically displays the high-definition complete image of vehicle chassis timely
- ◆ License plate collection system automatically identify the license plate and takes photos.
- ◆ High-brightness led lighting system, no need any external illumination.
- ◆ License plate number can be automatically identified and will be automatically saved
- ◆ Store the under vehicle scanning images and information of license plate as the special database

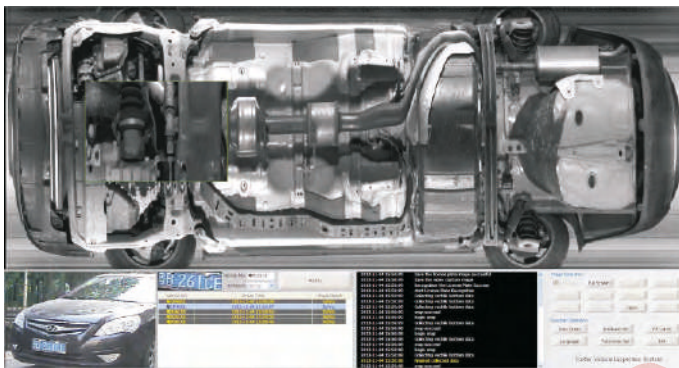


Image function

brightness, contrast, sharpen, magnifier, review, print etc.

Main parts:

computer, scanning system, license plate recognition system software, deceleration bumps (2 pieces), connection cables (10m*2), camera for license plate recognition

UVSS fixed type

Feature

- ◆ Dustproof, Moisture proof, Waterproof
- ◆ This equipment will not be damaged in the surface water for a long time.
- ◆ Pressure-proof design, can be adapted to a variety of vehicles and does not affect the normal running of the vehicle;
- ◆ Antifog and defogging design also makes the device works well in any climate environment.

Application

government agency, customs, garage, airport, troops, embassy, prison, nuclear power station, kinds of arenas and other places where vehicles are required to be checked.



TS1806NS

Technical parameter

Electric current: AC85V~264V/50-60HZ
 Power: <20W, low consume, low radiation
 Gross weight: 50 KG
 Workplace environment: -20℃~50℃
 Standard: GT15210-2003,CE
 Vertical dimension:2140*280*820mm

1. Intelligent partion: Can change detection zones according customers' demands
For example convert 6 zones to 12 zones or 18 zones(optional)
2. Multi-alarm sounds to choose
3. Operating frequency can be adjusted manually or automatically
4. Detection technology: Even detection technology, no blind spot
5. Internet technology: Remote upgrade system and remote control system
6. Working band: 50 working bands
7. Sensitivity of each detection zone: 400 level
8. Security level: 100 level
9. Statistics: Record the pass and alarm numbers
10. Query function: The system has real-time information query function
11. Intelligent Standby: The system has intelligent standby operation alerts
12. Detection speed: more than 60 people pass and detect in 1 minute



6/18 Zones Metal Detection

TS600P

Technical parameter:

Working environment \bar{y} -20 ℃ ~65 ℃
 External Dimension: 2250x850x500mm
 Packing Dimension: 1000x720x590mm
 Weight: NW 48KG, GW 53KG
 Power supply: 8,16,24,48,72 hours (optional)

Advanced Technology

1. Multi-zone technology: 24,33 detection zones, can change detection zones
2. Touch screen: 7-inch HDMI LCD touch screen
3. Mobile connection technology: realize mobile APP remote control
4. IP Grade: IP65 superior waterproof performance(optional)
5. Self calibration once power on
6. Self diagnostic, it will inform the user when exit the system
7. Start-stop technology: infrared devices with automatic

Features and Functions

1. Adjustable sensitivity of each detection zone
2. Multi-alarm sounds to choose
3. Operating frequency can be adjusted manually or automatically
4. Move after folded or installation(two move methods to choose)
5. Detection technology: Even detection technology, no blind spot
6. Internet technology: Remote upgrade system and remote control system
7. Working band: 100 working bands
8. Sensitivity of each detection zone: 255 level
9. Statistics: Record the pass and alarm numbers
10. Query function: The system has real-time information query function
11. Intelligent Standby: The system has intelligent standby operation alerts
12. Detection speed: more than 60 people pass and detect in 1 minute





TS600E

Six detecting zones
Sensitivity 0- 99 steps adjustable
Sound Alarm & LED visual alarm
Automatically counting
Anti-interference function
Easy assembly
Harmless to human body
Program Self-diagnose



TS2180S

Program Self-diagnose
Multi Zones:6/12/18
Sensitivity adjustable: 0-255
Sound Alarm
Six LED strip indicator
Automatically counting
Password protection
Easy assembly and simple services
Harmless to human body



TS1800S

English Software & LCD screen
Infrared remoter control
Multi Zones: 6-18 zones
High Sensitivity: 0-255 steps
Sound Alarm, LED light alarm
Anti-interference
Easy assembly, convenient
6 preset application programs
Program Self-diagnose when power on
Network support: (For Option)



TS2400S

Program Self-diagnose
Zone management: 8, 16, 24 zones
Infrared remoter control
Four side with LED, wheel
Sensitivity adjustable: 0- 300
Sound Alarm
Automatically counting
Password protection
Easy assembly and simple services
Harmless to human body
Battery Backup
Network support(optional)



MD-3003B1

Feature

Alarm: sound (vibration) and light alarm
Sensitivity: high, low
Charger and Rechargeable battery are for option
Earphone hole

High Sensitivity:
38-Pistol :20cm; Knife: 15cm; Blades: 10cm;

Application
Airport, bank, port, customs, police, factory etc.



V160

Feature

Detect small non-magnetic metal
4 levels sensitivity for option:
low ,normal ,high and ultra-high.
Alarm: sound, light, vibration
Power:7.4V lithium battery;
9V Ni-MH battery
100 hours standby time.
Anti-throwABS plastic

Application

Customs, Airport, Court, Exhibition centre



MD-200

Feature

Simple operation;
High sensitivity;
Easily detect pin-sized metal articles
Alarm: sound and light alarm, or vibration
and light alarm
9V Battery

Application

airport, bank, customs, police, factory etc.



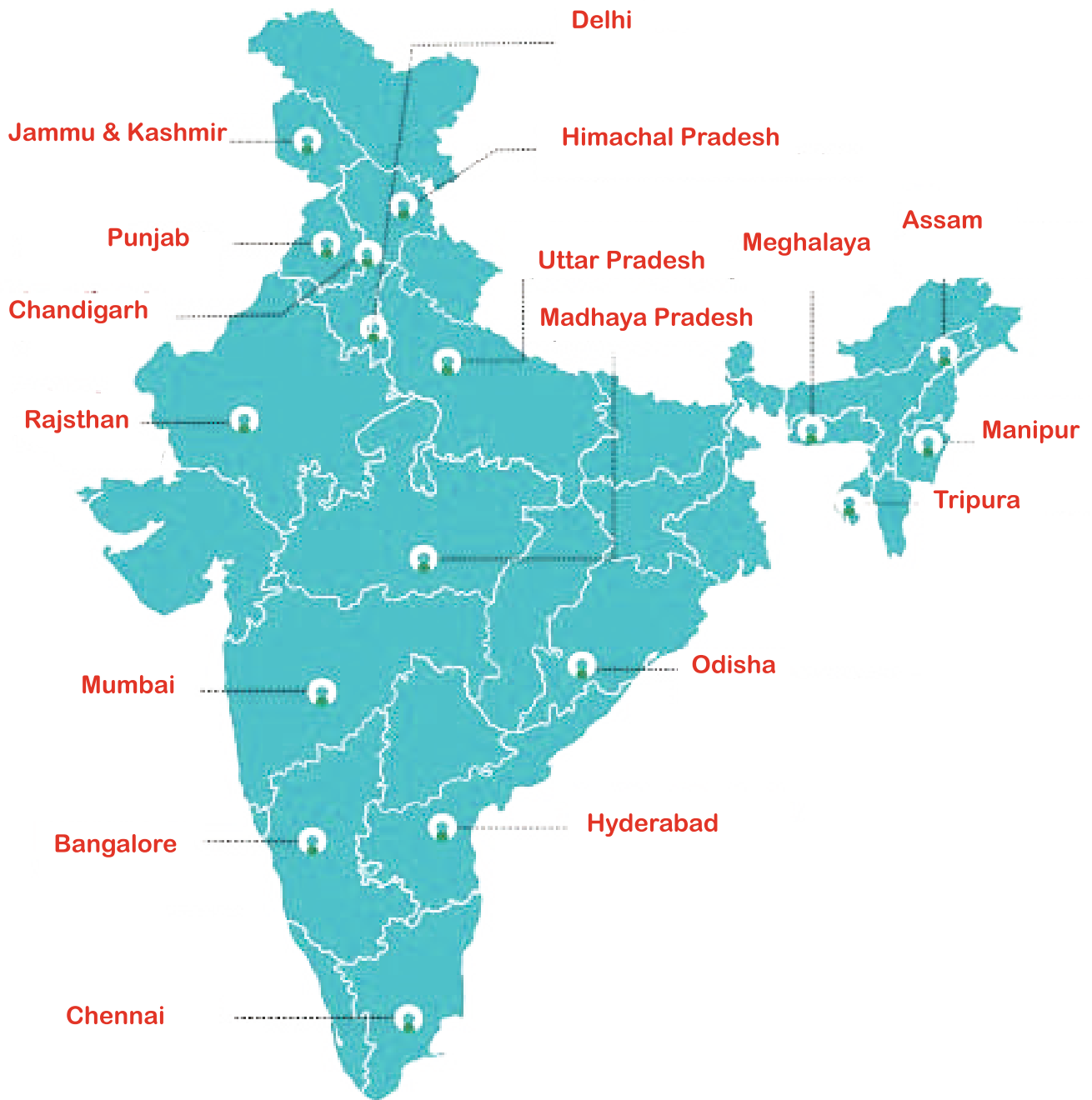
MD150

Feature

High Sensitivity, Fast scanning
Sound, Vibration and Light alarm
14 LED lights for metal size
Optional: earphone, charger,
rechargeable battery
64-Pistol : 18-19.5cm; Knife: 16-18cm;
Paper Clip: 3-6cm Coin:7.5-10cm

Application

Customs, Airport, Court, office, Prison ...etc



Technospacio Tech Solution Pvt Ltd

**ADD : 4, 5th Cross, dayanad layout , ramamurthy nagar,
Banaswadi, Bengaluru, karnataka 560016**

Phone: 97395 7767/6360782430

www.technospacio.com